

PROVIDENCE, R. I.  
CITY ENGINEER'S OFFICE  
STREET LINE DEP'T.

Nov. 28, 1888

014520

Providence, R. I.  
This map accompanies  
our report of this date.

# PLAT OF PLENTY STREET

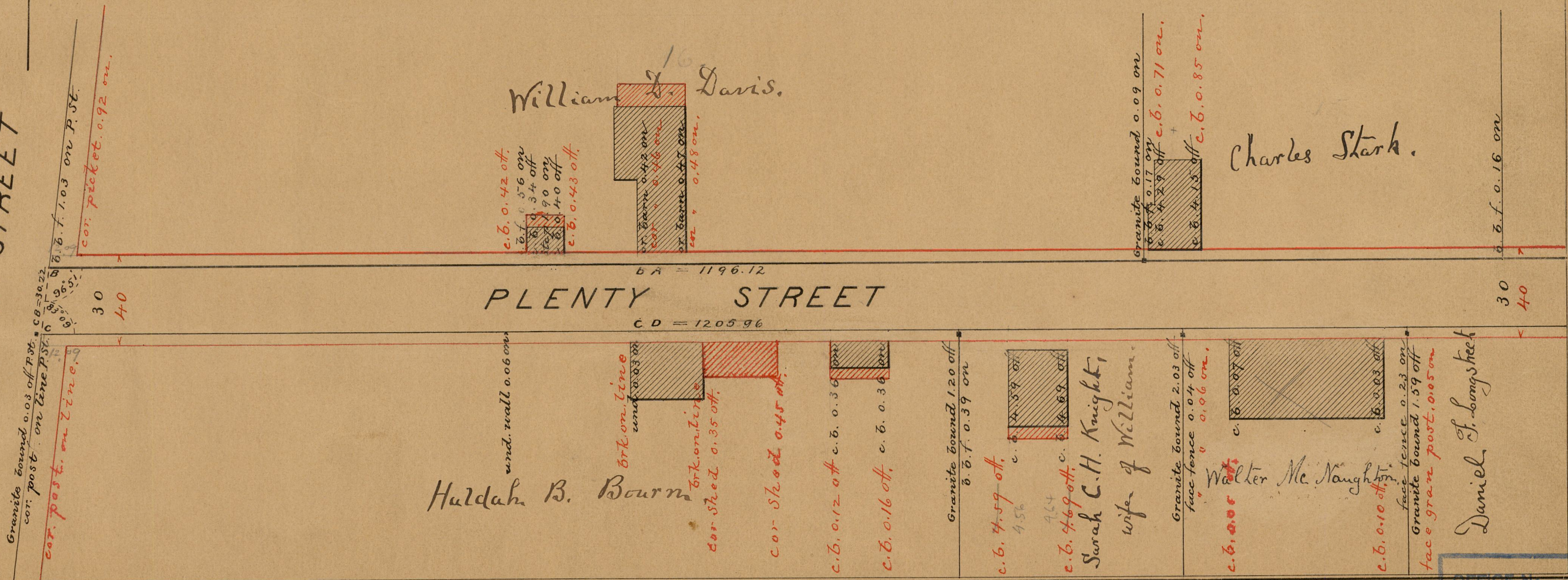
FROM BROAD ST. TO GREENWICH ST.

IN TWO SHEETS.

SCALE 50 FEET PER INCH.

Red notes were added in 1892 after street had  
been worked to 40 feet as widened Sept. 8. 1890. (D.B.F.)

Greenwich Ave.  
GREENWICH STREET



Granite bound 0.03 off Post.  
cor. post. on line P. St.  
c.b. 0.12  
c.b. 0.10  
c.b. 0.08  
c.b. 0.06  
c.b. 0.04  
c.b. 0.02

cor. post. on line P. St.  
c.b. 0.12  
c.b. 0.10  
c.b. 0.08  
c.b. 0.06  
c.b. 0.04  
c.b. 0.02

30  
40

30  
40

PLENTY STREET

BA = 1196.12

CD = 1205.96

und. wall 0.06 on

Huldah B. Bourn

Brk on line  
und. 0.03 on

Brk on line  
cor. shed 0.35 off.

cor. shed 0.45 off.

c.b. 0.12 off c.b. 0.36

c.b. 0.16 off c.b. 0.36

Granite bound 1.20 off  
c.b. 0.39 on

c.b. 4.59 off  
4.56

c.b. 4.69 off  
4.64

Sarah C.H. Knight,  
wife of William.

Granite bound 2.03 off  
face fence 0.04 off  
c.b. 0.06 on.

c.b. 0.07 off

c.b. 0.03 off

face fence 0.23 on  
Granite bound 1.59 off  
face gran. post. 0.05 on

c.b. 0.10 off

Daniel J. Longstreet

30  
40

c.b. 0.16 on

Granite bound 0.09 on  
c.b. 0.17 on  
c.b. 0.29 off c.b. 0.71 on.

c.b. 0.13 off c.b. 0.85 on.

Charles Stark.

OFFICE No. 9894  
DRAWER " 83  
SHEET " B-49

83  
B-49